



KONICA MINOLTA



Power BI

# POWER BI REPORTS FOR DYNAMICS 365 BUSINESS CENTRAL

**3 SETS OF INTERACTIVE  
DASHBOARDS FOR SALES,  
FINANCE AND INVENTORY**



Konica Minolta IT Solutions Czech

**Based on extensive experience from our customers, we have compiled 3 SETS OF REPORTS with the most frequently used data and divided them into packages according to the main user activities**

<b>1</b> <b>SALES</b>	<b>5</b> sales dashboards	A visualisation of individual salesperson performance or business plan execution
--------------------------	---------------------------------	---

<b>2</b> <b>FINANCE</b>	<b>7</b> finance dashboards	Analysis of company's financial and business results
----------------------------	-----------------------------------	--

<b>3</b> <b>WAREHOUSE</b>	<b>7</b> warehouse dashboards	Detailed overview of your company's inventory to further optimize your operations
------------------------------	-------------------------------------	--



Interactive dashboards  
that anyone knows  
how to use



The key information for  
your decision-making  
can be found within seconds



Implementation  
within 1 day



Secure sharing of data,  
customizable by user roles



Full control over  
your data



Delivery including data  
model for further use  
in customized reports

# 1

## SALES

A visualisation of the performance of individual salespersons or the execution of departmental sales plans

- 5 carefully compiled dashboards
- year-on-year sales comparison
- customer analysis
- payment discipline statistics
- customer retention analysis



# 2

## FINANCE

Overview of the company's financial and business results, key indicators graphically and in one place

- 7 unique dashboards
- analysis of the state of receivables, liabilities, income statement
- departments finance analysis
- ad-hoc and predictive analysis

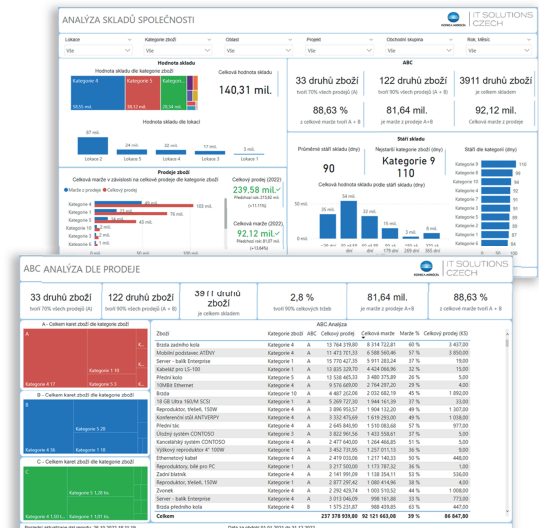


# 3

## WAREHOUSES

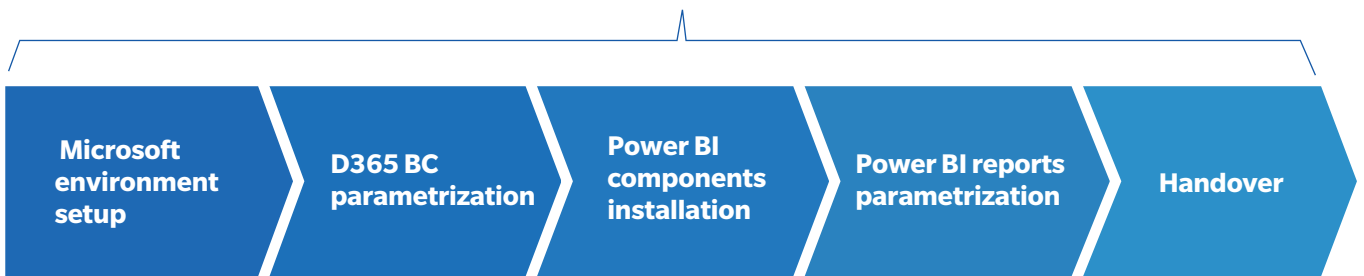
A detailed overview of the company's stock, which will allow you to further optimize your operation

- 7 unique dashboards
- warehouse value
- ABC analysis
- item sales
- warehouse aging
- idle items statistics



# PACKAGE IMPLEMENTATION

1 DAY



- Ready for **implementation with any version** of D365 Business Central
- Built on standard D365 Business Central, **deployable in any country**
- Additional services like **user trainings** or **custom reports** development
- Each package is delivered with underlying **complex data model** on which you can build your own reports or analytical solutions, either by yourself or with our help.
- Available in **Microsoft Appsource**



## Contact us

Konica Minolta IT Solutions Czech  
[its@konicaminolta.cz](mailto:its@konicaminolta.cz)